



ASPECTA[®]
ONE
ORNAMENTAL

A NEW DIMENSION IN FLOORING

TIMELESS MOTIFS INSPIRED BY NATURE.

The rich diversity of shapes, color and life found in nature come alive indoors with Aspecta® One Ornamental. Building on a solid foundation of beautiful wood and stone looks, these stunning overlay designs accent in all the right ways to create interior spaces that feel just right.

Declare.

Aspecta One - Luxury Vinyl Tile
Metroflor Corporation

Final Assembly: Zhangjiagang, Jiangsu, China
Life Expectancy: 20 Years
End of Life Options: Recyclable (100%)

Ingredients:

Filler: Calcium Carbonate; Polymer: **PVC**;
Plasticizer: Dioctyl Terephthalate (DOTP);
Modifiers: 2-Propenenitrile, Polymer with
1,3-Butadiene, Methyl Methacrylate, Copolymer
with Butyl Acrylate; Stabilizers: Calcium
Stearate, Zinc Stearate, Lanthanum(3+)
Stearate; UV Acrylic Layer: Polyurethane Foams,
1,6-Hexanediol Diacrylate, Trimethylolpropane
Triacrylate (TMPTA), Dipropylene Glycol
Diacrylate, Fumed Silica, Crystalline-Free,
Hydroxycyclohexyl Phenyl Ketone; Pigment:
Carbon Black; Inks: C.I. Pigment Red 221, Vinyl
Chloride-Vinyl Acetate Copolymers

Living Building Challenge Criteria:

HCV-0003
VOC Content: N/A
Declaration Status

EXP: 01 APR 2018
VOC Emissions: CDPH Compliant
☐ LBC Red List Free
☐ LBC Compliant
☒ Declared

MANUFACTURER RESPONSIBLE FOR LABEL ACCURACY

INTERNATIONAL LIVING FUTURE INSTITUTE™ declareproducts.com

Aspecta® proudly supports the International Living Future Institute™ and its Declare™ Label transparency program, which encourages manufacturers to disclose the ingredients in their products, thus allowing consumers to make informed decisions about the materials they purchase.





MASQUERADE

Large medallion-esque patterns entice and intrigue the eye in fresh, surprising ways. Paired with a bold or neutral base, Masquerade will appear as either a positive overprint for a painted impression or a negative overprint that creates the hard-edge effect of carving.



MASQUERADE

MIDTOWN

These authentic, rough concrete styles feature traces of the production process including wood imprints, drying pores and slight chalk efflorescence. Neutral, earthy tones provide the perfect backdrop for the captivating Masquerade overprint.

Size: 24" x 24"/609.6mm x 609.6mm
Edge Detail: Square
Emboss: Textured Concrete

MASQUERADE MIDTOWN / MIDTOWN



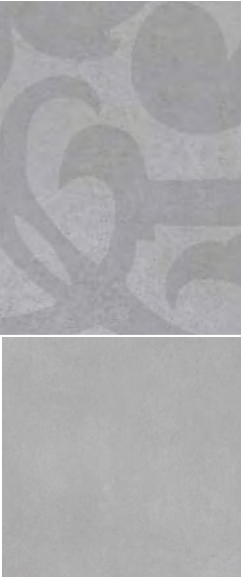
MASQUERADE MIDTOWN
COLOR: GRAMERCY
PATTERN# 1722361-Q14



MIDTOWN
COLOR: GRAMERCY
PATTERN# 1722361



MASQUERADE MIDTOWN
COLOR: FLATIRON
PATTERN# 1722362-Q15



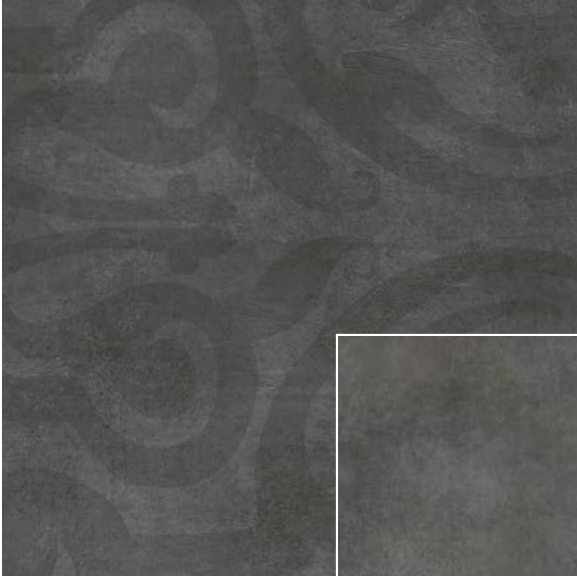
MIDTOWN
COLOR: FLATIRON
PATTERN# 1722362



MASQUERADE MIDTOWN
COLOR: EMPIRE
PATTERN# 1722367-Q16



MIDTOWN
COLOR: EMPIRE
PATTERN# 1722367



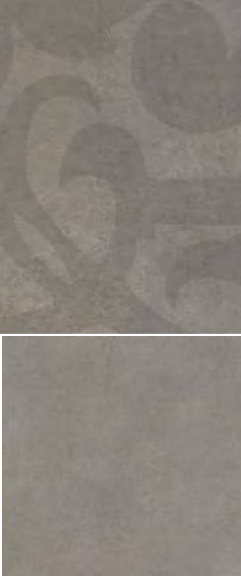
MASQUERADE MIDTOWN
COLOR: ROCKEFELLER
PATTERN# 1722369-Q17



MIDTOWN
COLOR: ROCKEFELLER
PATTERN# 1722369



MASQUERADE MIDTOWN
COLOR: GRACE
PATTERN# 1722360-Q18



MIDTOWN
COLOR: GRACE
PATTERN# 1722360



MASQUERADE MIDTOWN
COLOR: BROWNSTONE
PATTERN# 1722364-Q27



MIDTOWN
COLOR: BROWNSTONE
PATTERN# 1722364



MASQUERADE
MIDTOWN PRISM

Midtown Prism brings together striking, on-trend colors from around the world with authentic, rough concrete styles. Combined with a Masquerade overprint, these bold hues energize interior spaces whether used in monochromatic or multicolored design schemes.

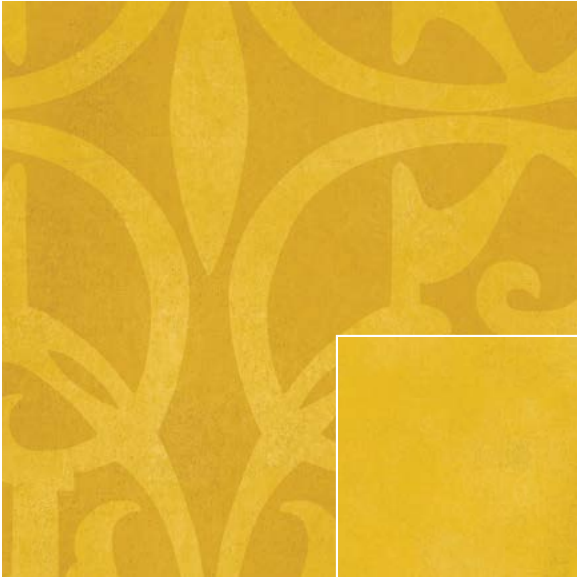
Size: 24" x 24"/609.6mm x 609.6mm
Edge Detail: Square
Emboss: Textured Concrete

MASQUERADE MIDTOWN PRISM / MIDTOWN PRISM



MASQUERADE MIDTOWN PRISM
COLOR: GREEN
PATTERN# Q6-17223618

MIDTOWN PRISM
COLOR: GREEN
PATTERN# 17223618



MASQUERADE MIDTOWN PRISM
COLOR: YELLOW
PATTERN# Q5-17223619

MIDTOWN PRISM
COLOR: YELLOW
PATTERN# 17223619



MASQUERADE MIDTOWN PRISM
COLOR: ORANGE
PATTERN# Q4-17223620

MIDTOWN PRISM
COLOR: ORANGE
PATTERN# 17223620



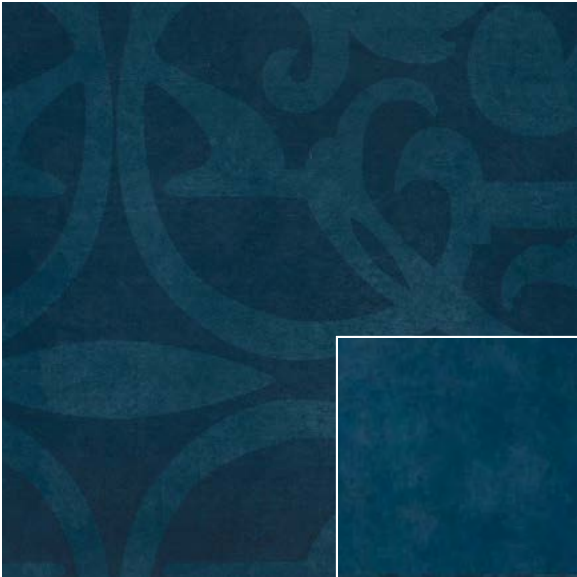
MASQUERADE MIDTOWN PRISM
COLOR: RED
PATTERN# Q3-17223621

MIDTOWN PRISM
COLOR: RED
PATTERN# 17223621



MASQUERADE MIDTOWN PRISM
COLOR: PLUM
PATTERN# Q1-17223622

MIDTOWN PRISM
COLOR: PLUM
PATTERN# 17223622



MASQUERADE MIDTOWN PRISM
COLOR: BLUE
PATTERN# Q2-17223623

MIDTOWN PRISM
COLOR: BLUE
PATTERN# 17223623

MASQUERADE

Size: 24" x 24"/609.6mm x 609.6mm

MASQUERADE MIDTOWN



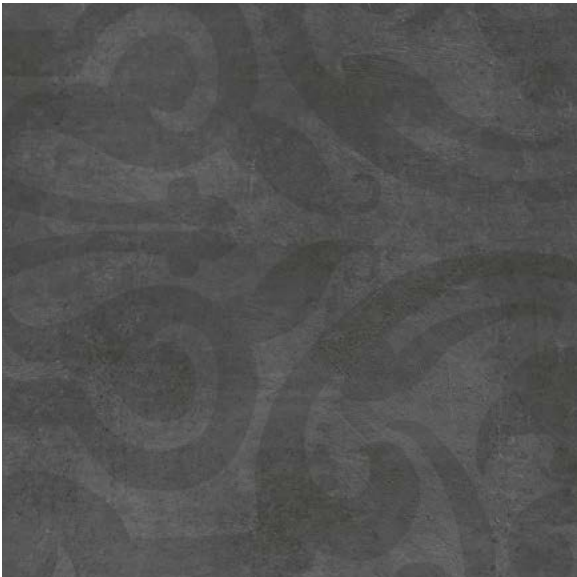
MASQUERADE MIDTOWN
COLOR: GRAMERCY - PATTERN# 1722361-Q14



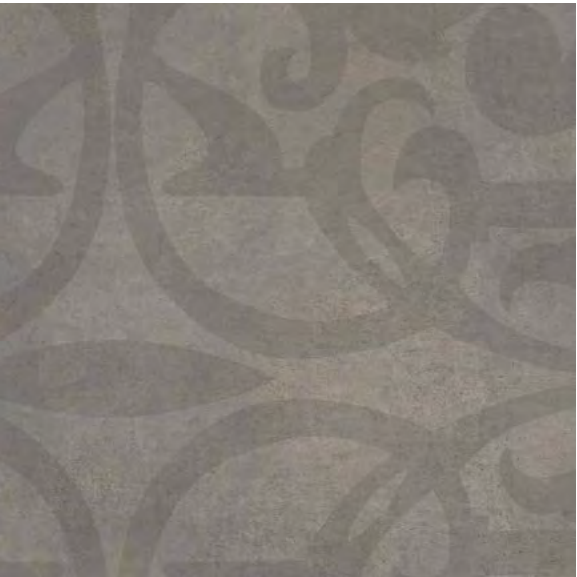
MASQUERADE MIDTOWN
COLOR: FLATIRON - PATTERN# 1722362-Q15



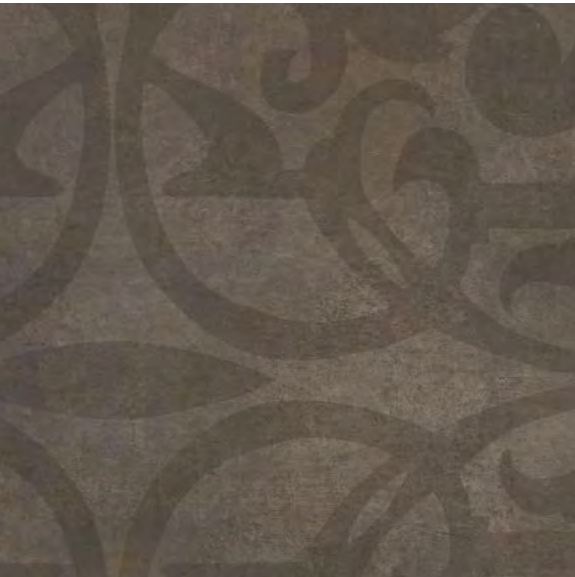
MASQUERADE MIDTOWN
COLOR: EMPIRE - PATTERN# 1722367-Q16



MASQUERADE MIDTOWN
COLOR: ROCKEFELLER - PATTERN# 1722369-Q17



MASQUERADE MIDTOWN
COLOR: GRACE - PATTERN# 1722360-Q18

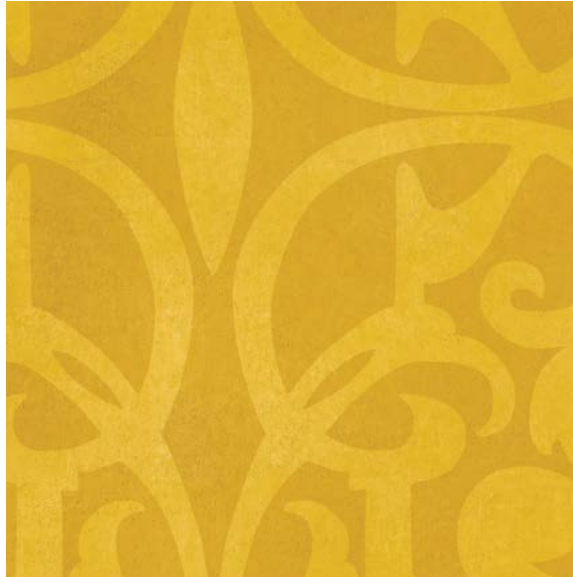


MASQUERADE MIDTOWN
COLOR: BROWNSTONE - PATTERN# 1722364-Q27

MASQUERADE MIDTOWN PRISM



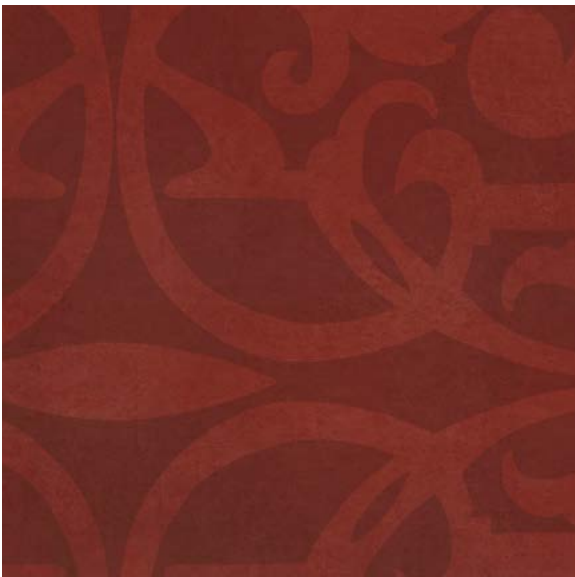
MASQUERADE MIDTOWN PRISM
COLOR: GREEN – PATTERN# Q6-17223618



MASQUERADE MIDTOWN PRISM
COLOR: YELLOW – PATTERN# Q5-17223619



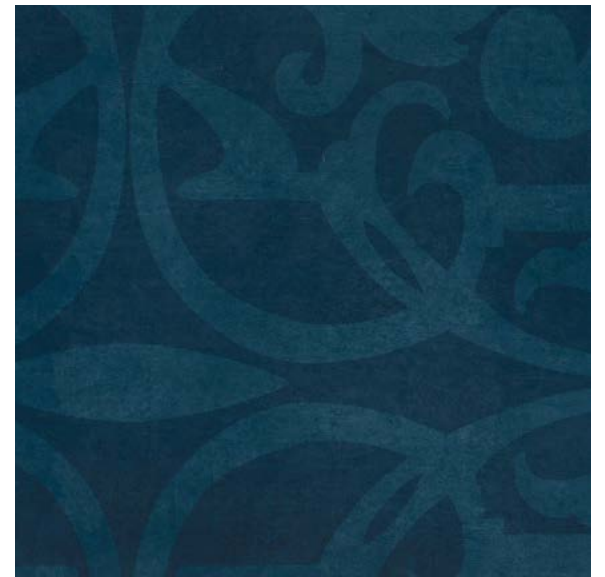
MASQUERADE MIDTOWN PRISM
COLOR: ORANGE – PATTERN# Q4-17223620



MASQUERADE MIDTOWN PRISM
COLOR: RED – PATTERN# Q3-17223621



MASQUERADE MIDTOWN PRISM
COLOR: PLUM – PATTERN# Q1-17223622



MASQUERADE MIDTOWN PRISM
COLOR: BLUE – PATTERN# Q2-17223623



DAMASK

Inspired by heirloom Persian rugs and the emerging “rough luxe” distressed motif found in specialty woven carpet, Damask delivers a distinctive high-end look that takes us back in time with its layered richness and time-worn appearance.



DAMASK

MIDTOWN

The classic neutrals of Midtown meet the time-honored beauty of heirloom and specialty woven carpets reflected in our Damask overlay. These perfect pairings will complement a broad range of interiors with their layered richness and unique textures.

Size: 24" x 24"/609.6mm x 609.6mm
Edge Detail: Square
Emboss: Textured Concrete

DAMASK MIDTOWN / MIDTOWN



DAMASK MIDTOWN
COLOR: BROWNSTONE
PATTERN# 1722364-D9

MIDTOWN
COLOR: BROWNSTONE
PATTERN# 1722364



DAMASK MIDTOWN
COLOR: GRAMERCY
PATTERN# 1722361-D10

MIDTOWN
COLOR: GRAMERCY
PATTERN# 1722361



DAMASK MIDTOWN
COLOR: ROCKEFELLER
PATTERN# 1722369-D11

MIDTOWN
COLOR: ROCKEFELLER
PATTERN# 1722369



DAMASK

WASHED WOOD

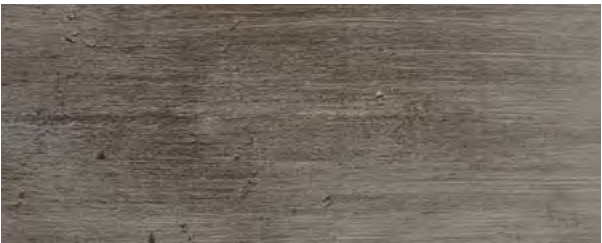
The Damask Washed Wood collection offers endless design possibilities with its unexpected juxtaposition of rugged, limed wood and the classic woven textures of heirloom and specialty carpets.

Size: 7.87" x 48.11"/200mm x 1222mm
Edge Detail: Square
Emboss: Barnside

DAMASK WASHED WOOD / WASHED WOOD



DAMASK WASHED WOOD - COLOR: MIDNIGHT SILVER - PATTERN# 1326816-D17



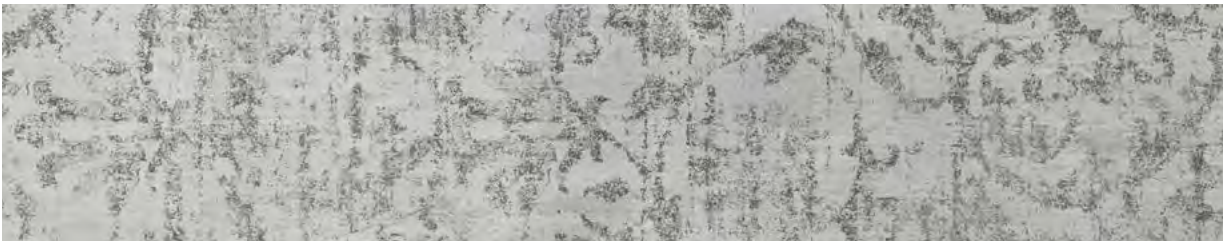
WASHED WOOD - COLOR: MIDNIGHT - PATTERN# 1326816



DAMASK WASHED WOOD - COLOR: MIDNIGHT BLACK - PATTERN# 1326816-D18



WASHED WOOD - COLOR: MIDNIGHT - PATTERN# 1326816



DAMASK WASHED WOOD - COLOR: ARCTIC - PATTERN# 1326819-D22



WASHED WOOD - COLOR: ARCTIC - PATTERN# 1326819



DAMASK

SHIPWRIGHT

Combine the popularity of oak with the rich texture of our
Damask overlay for a stunningly beautiful floor that
will complement a broad range of interiors.

Size: 7.87" x 48.11"/200mm x 1222mm
Edge Detail: Square
Emboss: In-Register

DAMASK SHIPWRIGHT / SHIPWRIGHT



DAMASK SHIPWRIGHT - COLOR: DANZIG - PATTERN# 1329411-D22



SHIPWRIGHT - COLOR: DANZIG - PATTERN# 1329411



DAMASK SHIPWRIGHT - COLOR: MONARCH - PATTERN# 1329415-D24



SHIPWRIGHT - COLOR: MONARCH - PATTERN# 1329415



DAMASK SHIPWRIGHT - COLOR: LYNX - PATTERN# 1329416-D25



SHIPWRIGHT - COLOR: LYNX - PATTERN# 1329416



DAMASK SHIPWRIGHT - COLOR: PIONEER - PATTERN# 1329418-D27



SHIPWRIGHT - COLOR: PIONEER - PATTERN# 1329418



DAMASK

ALPINE RIDGE

The lightly faded, worn and weathered details of these Alpine Ridge planks take on an even more enchanting luster when matched with our Damask overlay.

Size: 7.87" x 48.11"/200mm x 1222mm
Edge Detail: Square
Emboss: Sawcut

DAMASK ALPINE RIDGE / ALPINE RIDGE



DAMASK ALPINE RIDGE - COLOR: MICA - PATTERN# 1328519-D25

ALPINE RIDGE - COLOR: MICA - PATTERN# 1328519



DAMASK ALPINE RIDGE - COLOR: MOONSTONE - PATTERN# 1328510-D26

ALPINE RIDGE - COLOR: MOONSTONE - PATTERN# 1328510

DAMASK

Planks are available in 7.87" x 48.11"/200mm x 1222mm
Tiles are available in 24" x 24"/609.6mm x 609.6mm

DAMASK MIDTOWN



DAMASK MIDTOWN
COLOR: BROWNSTONE - PATTERN# 1722364-D9

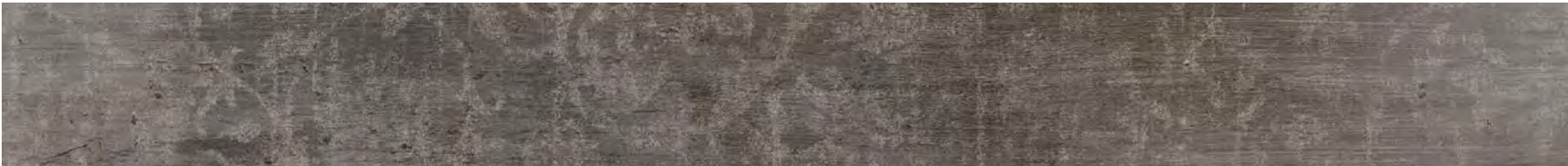


DAMASK MIDTOWN
COLOR: GRAMERCY - PATTERN# 1722361-D10



DAMASK MIDTOWN
COLOR: ROCKEFELLER - PATTERN# 1722369-D11

DAMASK WASHED WOOD



DAMASK WASHED WOOD - COLOR: MIDNIGHT SILVER - PATTERN# 1326816-D17



DAMASK WASHED WOOD - COLOR: MIDNIGHT BLACK - PATTERN# 1326816-D18



DAMASK WASHED WOOD - COLOR: ARCTIC - PATTERN# 1326819-D22

DAMASK ALPINE RIDGE



DAMASK ALPINE RIDGE - COLOR: MICA - PATTERN# 1328519-D25



DAMASK ALPINE RIDGE - COLOR: MOONSTONE - PATTERN# 1328510-D26

DAMASK SHIPWRIGHT



DAMASK SHIPWRIGHT - COLOR: DANZIG - PATTERN# 1329411-D22



DAMASK SHIPWRIGHT - COLOR: MONARCH - PATTERN# 1329415-D24



DAMASK SHIPWRIGHT - COLOR: LYNX - PATTERN# 1329416-D25



DAMASK SHIPWRIGHT - COLOR: PIONEER - PATTERN# 1329418-D27



MALTA

Intricate and exotic, Malta was born out of the Moorish design influence which features ornate details and elements of nature. Coupled with the beauty of natural woodgrains, Malta works well in vintage, mid-century, and contemporary settings.







MALTA

SHIPWRIGHT

First, we reinvented Oak by paying homage to its natural imperfections along with the cutting and planing marks. Next, we introduced it to our Malta overlay. The result is a delight for the senses.

Size: 7.87" x 48.11"/200mm x 1222mm
Edge Detail: Square
Emboss: In-Register

MALTA SHIPWRIGHT / SHIPWRIGHT



MALTA SHIPWRIGHT - COLOR: MONARCH PLUM - PATTERN# 1329415-M14



SHIPWRIGHT - COLOR: MONARCH - PATTERN# 1329415



MALTA SHIPWRIGHT - COLOR: MONARCH BLUE - PATTERN# 1329415-M15



SHIPWRIGHT - COLOR: MONARCH - PATTERN# 1329415



MALTA

ALPINE RIDGE

The uniquely beautiful story told by the lightly faded and weathered details of these woodgrains moves to an entirely new level when introduced to our Malta overlay.

Size: 7.87" x 48.11"/200mm x 1222mm
Edge Detail: Square
Emboss: Sawcut

MALTA ALPINE RIDGE / ALPINE RIDGE



MALTA ALPINE RIDGE - COLOR: MICA PLUM - PATTERN# 1328519-M12



ALPINE RIDGE - COLOR: MICA - PATTERN# 1328519



MALTA ALPINE RIDGE - COLOR: MICA BLUE - PATTERN# 1328519-M13



ALPINE RIDGE - COLOR: MICA - PATTERN# 1328519



MALTA ALPINE RIDGE - COLOR: MICA BROWN - PATTERN# 1328519-M14



ALPINE RIDGE - COLOR: MICA - PATTERN# 1328519



MALTA ALPINE RIDGE - COLOR: MOONSTONE SILVER - PATTERN# 1328510-M20



ALPINE RIDGE - COLOR: MOONSTONE - PATTERN# 1328510

MALTA

Size: 7.87” x 48.11”/200mm x 1222mm

MALTA SHIPWRIGHT

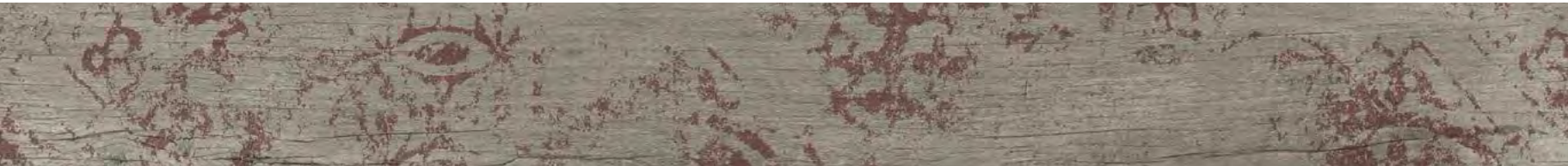


MALTA SHIPWRIGHT - COLOR: MONARCH PLUM - PATTERN# 1329415-M14



MALTA SHIPWRIGHT - COLOR: MONARCH BLUE - PATTERN# 1329415-M15

MALTA ALPINE RIDGE



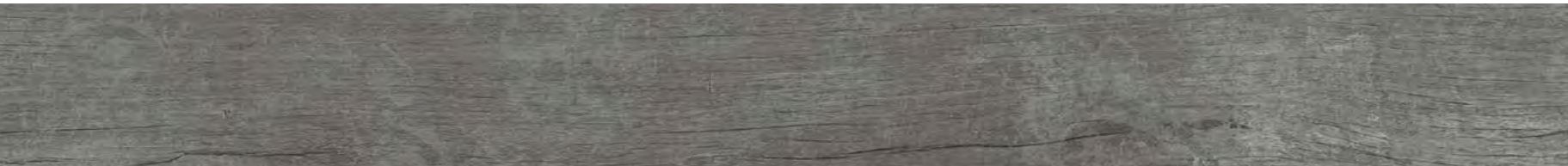
MALTA ALPINE RIDGE - COLOR: MICA PLUM - PATTERN# 1328519-M12



MALTA ALPINE RIDGE - COLOR: MICA BLUE - PATTERN# 1328519-M13



MALTA ALPINE RIDGE - COLOR: MICA BROWN - PATTERN# 1328519-M14



MALTA ALPINE RIDGE - COLOR: MOONSTONE SILVER - PATTERN# 1328510-M20



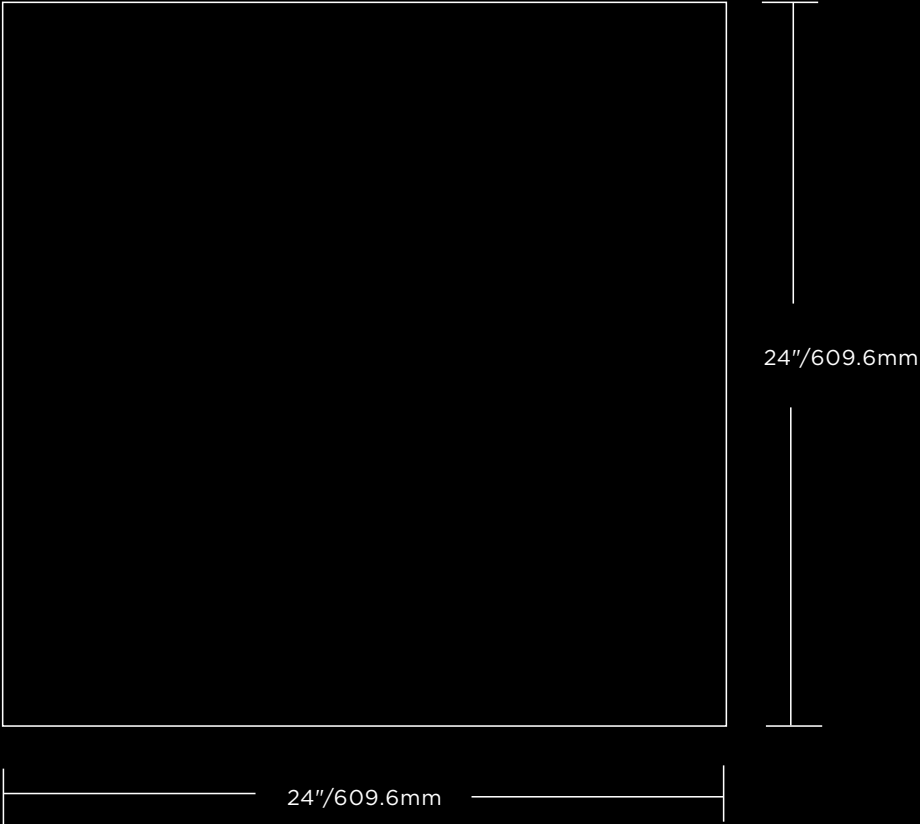
TECHNICAL DETAILS

Aspecta® One Ornamental planks and tiles are available in two sizes:

PLANK



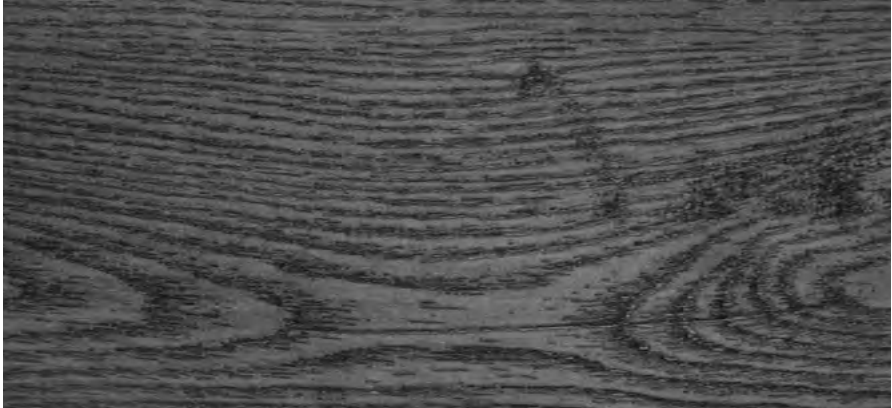
TILE



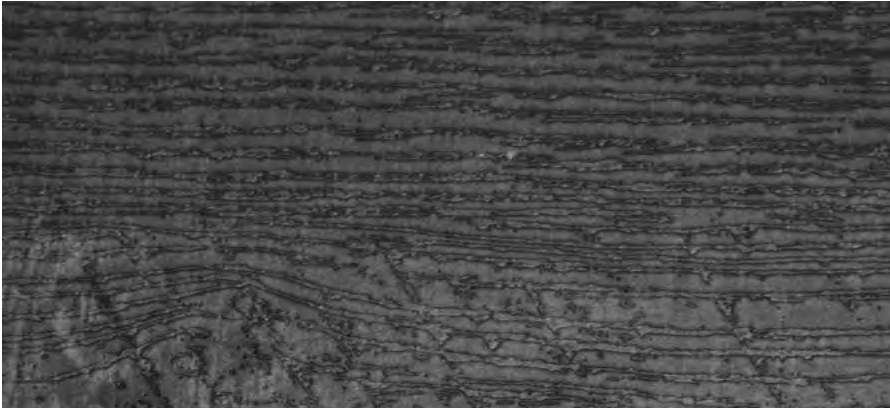
Discover Aspecta® One Ornamental's beautiful collection of in-register and specialty-design Wood embosses. The Tile collection boasts an exclusive embossing technique - Textured Concrete.



BARNSIDE – The relief-like surface image of Barnside reflects natural aged wooden planks and gives rustic wood interiors a truly authentic finish.



IN-REGISTER SHIPWRIGHT – This beautiful oak is straight-grown and virtually knotless, with only slight imperfections as well as cutting and planing marks reflected in its surface.



SAWCUT – Unplaned and unpolished, Sawcut is construction timber cut directly from tree trunks, with sawing marks and sawdust intact. This gives this wood unmatched character and authenticity.



TEXTURED CONCRETE – With its rough texture, this freshly dried industrial concrete shows traces of the preparation process, such as drying pores and the beat trace of smoothing tools. Perfect for adding an industrial feel to any setting.

TECHNICAL DETAILS

PHYSICAL PROPERTIES & PACKAGING - PLANK (DRYBACK - 0.098" GAUGE / 22MIL WEAR LAYER)	
Size	7.87" x 48.11" (200mm x 1222mm)
Construction	Solid Vinyl Tile/LVT
Use	Commercial
Wear Layer	22 mil (0.55mm)
Finish	Urethane Coating with Ceramic Bead Particles
Gauge	0.098" (2.5mm)
Pieces/Carton	12
Coverage/Piece	2.63 Sq.Ft. (0.244 Sq.M.)
Coverage/Carton	31.56 Sq.Ft. (2.93 Sq.M.)
Coverage/Pallet	40 Cartons (1,262.4 Sq.Ft./117.2 Sq.M.)
Coverage/Container	40 Pallets (50,496 Sq.Ft./4,688 Sq.M.)
Aspecta® One Limited Commercial Warranty¹	Material: 20 Years (100%) Labor: 10 Years (Pro-Rated)

PHYSICAL PROPERTIES & PACKAGING - TILE (DRYBACK - 0.098" GAUGE / 22MIL WEAR LAYER)	
Size	24" x 24" (609.6mm x 609.6mm)
Construction	Solid Vinyl Tile/LVT
Use	Commercial
Wear Layer	22 mil (0.55mm)
Finish	Urethane Coating with Ceramic Bead Particles
Gauge	0.098" (2.5mm)
Pieces/Carton	9
Coverage/Piece	4 Sq.Ft. (0.371 Sq.M.)
Coverage/Carton	36 Sq.Ft. (3.34 Sq.M.)
Coverage/Pallet	20 Cartons (720 Sq.Ft./66.8 Sq.M.)
Coverage/Container	66 Pallets (47,520 Sq.Ft./4,408.8 Sq.M.)
Aspecta® One Limited Commercial Warranty¹	Material: 20 Years (100%) Labor: 10 Years (Pro-Rated)

FOOTNOTES

- 1) Aspecta® One Limited Commercial Warranty: Please see full terms and conditions of our warranties at www.aspecta flooring.com.
2) CAN/ULC S102.2-10: Results obtained when installed with Prevail® 4000 2-Part Epoxy Adhesive or with Prevail® 6000 PSA (Pressure Sensitive Adhesive)

NORTH AMERICAN STANDARDS - MANUFACTURING & USAGE (ASTM F1700)			
Standard	Description	Requirements	Results
ASTM F1700	Classification	Refer to Standard	Class III, Type B
ASTM F386	Thickness	±0.005"	Passes Requirements
ASTM F410	Wear Layer Thickness	Commercial Classification: ≥ 20mil (0.5mm)	Passes Requirements
ASTM F2421/ ASTM F2055	Size & Squareness	Size: ±0.016"/Linear Foot; Squareness: ≤0.010"	Passes Requirements
ASTM F1914	Residual Indentation	Average <8%; Maximum - Any Sample ≤10%	Surpasses Requirements
ASTM F137	Flexibility	No cracks/breaks (1"/25.4mm Mandrel)	Surpasses Requirements
ASTM F2199	Dimensional Stability	≤0.020"/Linear Foot	Surpasses Requirements
ASTM F925	Chemical Resistance	No more than "Slight Change"	Passes Requirements
ASTM F1514	Resistance to Heat	Average & Max ΔE < 8.0	Surpasses Requirements
ASTM F1515	Resistance to Light	Average & Max ΔE < 8.0	Surpasses Requirements

NORTH AMERICAN STANDARDS - SAFETY & PERFORMANCE			
Standard	Description	Requirements	Results
ASTM E648	Radiant Panel (Critical Radiant Flux)	Class I: ≥ 0.45 W/cm²	Passes Requirements
ASTM E662	Smoke Density	Flaming & Non-Flaming ≤ 450	Passes Requirements
CAN/ULC S102.2-10²	Surface Burning Characteristics, Canada	Use dependent	Flame Spread Rating (FSR): ≤15 Smoke Developed Class. (SDC): ≤150
CDPH/EHLB/ Standard v1.1	VOCs/TVOCs, Formaldehyde	Refer to Standard	Passes Requirements
ASTM F963	Heavy Metals	Refer to Standard	Passes Requirements
ASTM D7823 / CPSC-CH-C1001-09.3	Phthalates	Refer to Standard	Meets CPSIA Guidelines
ASTM D2047	Coefficient of Friction / Slip Resistance	N/A	≥0.6 (Dry)
ASTM F970	Static Load Limit	±0.005", 250-Lbs. Load	≥1,000 lbs. (Surpasses Requirements)
ASTM D4060	Abrasion Resistance	N/A	≥20,000 cycles (Varies with emboss)

NORTH AMERICAN STANDARDS - SOUND (TESTED WITH PREVAIL® GLUE-DOWN PAD OVER 6” CONCRETE SLAB WITH DROP-CEILING ASSEMBLY)			
Standard	Description	Requirements	Results
ASTM E90 & ASTM E413	Airborne Sound Transmission Loss	Sound Transmission Class (STC) ≥ 50	STC 61 (Surpasses Requirements)
ASTM E492 & ASTM E989	Impact Sound Transmission (Floor-Ceiling Assemblies)	Impact Insulation Class (IIC) ≥ 50	IIC 70 (Surpasses Requirements)



ASPECTA
ONE
ORNAMENTAL

Visionary Living Commercial Floors
75D Carnarvon St,
Silverwater, 2128,
NSW, Australia
Alex Morellato
Commercial Director
Tel: +61 (0) 455 557353
alex@visionary-living.com.au
Stuart Burnett
Sales Manager
Tel: +61 (0) 439 833441
stuart@visionary-living.com.au

ERME Office:
ASPECTA BV
Argon 37a
4751XC Oud Gastel
The Netherlands
Tel: +31 (0) 88 1662500
info@aspecta flooring.com

ASPECTAFLOORING.COM